

SUPERIOR COURT
State of Delaware

2023 Annual Report Statistical Information

SUPERIOR COURT

Caseload Breakdowns - Fiscal Year 2023 - Civil Case Filings

	Complaints		Mechanic's Liens and Mortgages		Appeals	
New Castle County	4,300	54.0%	834	10.5%	82	1.0%
Kent County	373	31.6%	341	28.9%	30	2.5%
Sussex County	346	29.8%	312	26.9%	24	2.1%
State	5,019	48.7%	1,487	14.4%	136	1.3%

	Involuntary Commitments		Miscellaneous		Total	
New Castle County	490	6.1%	2,262	28.4%	7,968	100%
Kent County	76	6.4%	359	30.4%	1,179	100%
Sussex County	68	5.9%	410	35.3%	1,160	100%
State	634	6.2%	3,031	29.4%	10,307	100%

Caseload Breakdowns - Fiscal Year 2023 - Civil Case Dispositions

	Complaints		Mechanic's Liens and Mortgages		Appeals	
New Castle County	3,471	49.1%	830	11.7%	82	1.2%
Kent County	345	30.6%	386	34.2%	12	1.1%
Sussex County	338	29.3%	319	27.6%	20	1.7%
State	4,154	44.4%	1,535	16.4%	114	1.2%

	Involuntary Commitments		Miscellaneous		Total	
New Castle County	505	7.1%	2,178	30.8%	7,066	100%
Kent County	69	6.1%	316	28.0%	1,128	100%
Sussex County	64	5.5%	413	35.8%	1,154	100%
State	638	6.8%	2,907	31.1%	9,348	100%

Source: Prothonotary's Offices, Superior Court; Administrative Office of the Courts.

Percentages may not total 100 due to rounding.

SUPERIOR COURT

Caseload Comparison - Fiscal Years 2022-2023 - Civil Case Filings

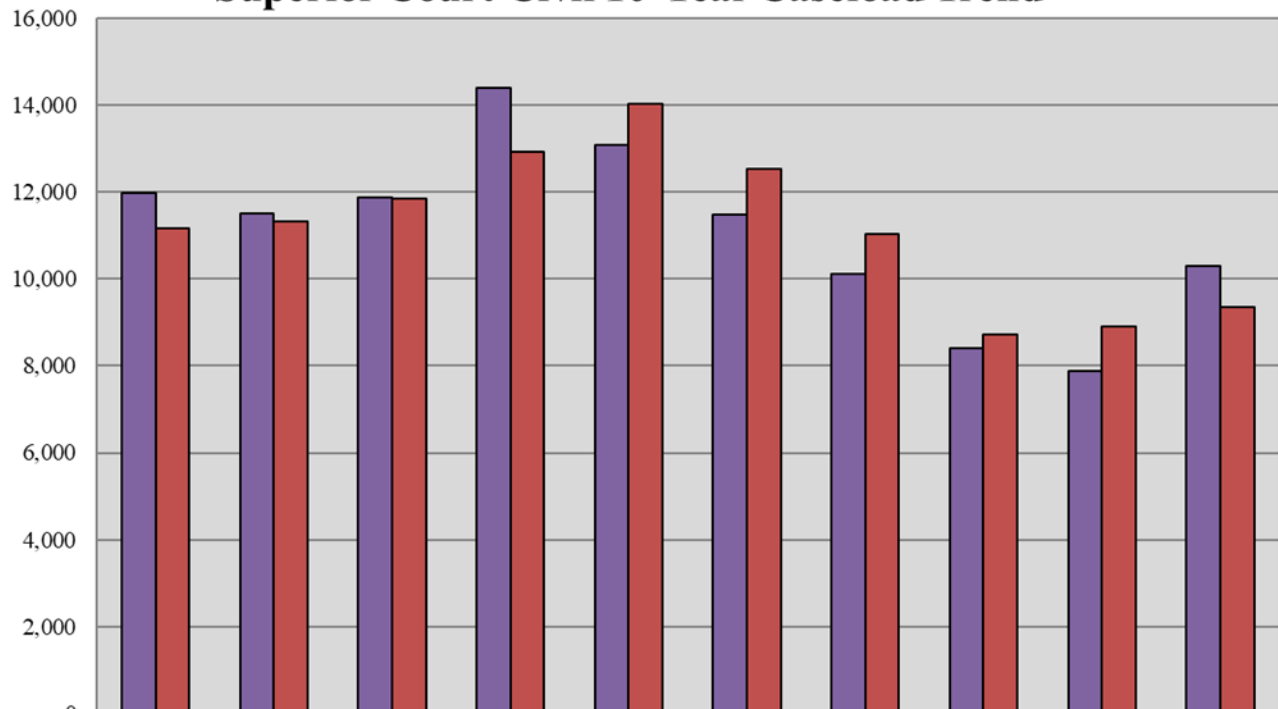
	2022	2023	Change	% Change
New Castle County	5,918	7,968	2,050	34.6%
Kent County	986	1,179	193	19.6%
Sussex County	978	1,160	182	18.6%
State	7,882	10,307	2,425	30.8%

Caseload Comparison - Fiscal Years 2022-2023 - Civil Case Dispositions

	2022	2023	Change	% Change
New Castle County	6,811	7,066	255	3.7%
Kent County	1,063	1,128	65	6.1%
Sussex County	1,037	1,154	117	11.3%
State	8,911	9,348	437	4.9%

Source: Prothonotary's Offices, Superior Court; Administrative Office of the Courts.

Superior Court Civil 10-Year Caseload Trend



	2014	2015	2016	2017	2018	2019	2020	2021	2022	2023
■ Filings	11,972	11,498	11,890	14,394	13,076	11,492	10,117	8,408	7,882	10,307
■ Dispositions	11,166	11,338	11,857	12,934	14,026	12,522	11,023	8,731	8,911	9,348

Fiscal Year

* Report incorporates additional data made available since publication of the FY 2015 Annual Report.

SUPERIOR COURT

Caseload Breakdowns- Fiscal Year 2023 - Criminal Filings									
	Indictment		Rule 9 Warrant		Information		Other*		Total
New Castle County	1,852	64.4%	130	4.5%	878	30.5%	14	0.5%	2,874
Kent County	652	82.7%	8	1.0%	123	15.6%	5	0.6%	788
Sussex County	324	24.0%	209	15.5%	807	59.7%	12	0.9%	1,352
State	2,828	56.4%	347	6.9%	1,808	36.1%	31	0.6%	5,014

Caseload Breakdowns- Fiscal Year 2023 - Criminal Dispositions										
	Trial		Guilty Plea**		Nolle Prosequi		Remand/Transfer		Order/Reserved Decision	
New Castle County	105	3.2%	2,343	70.3%	875	26.3%	-	0%	0	0%
Kent County	15	1.6%	704	76.5%	174	18.9%	2	0.2%	0	0%
Sussex County	9	0.6%	1,347	83.3%	240	14.8%	11	0.7%	0	N/A
State	129	2.2%	4,394	74.9%	1,289	22.0%	13	0.2%	-	0%

	Dismissal		Drug Court		Consolidation		Total	
New Castle County	8	0.2%	-	0%	-	0%	3,331	100%
Kent County	3	0.3%	22	2.4%	-	0%	920	100%
Sussex County	6	0.4%	3	0.2%	1	0.1%	1,617	100%
State	17	0.3%	25	0.4%	1	0.0%	5,868	100%

*Includes appeals, reinstatements, guilty pleas withdrawn, granted motions for new trial and severances.

**Includes Probation Before Judgment & Guilty but Mentally Ill, First Offender Program & civil possession of marijuana (RSP).

FOP = First Offender Program.

Percentages may not total 100 due to rounding.

Source: Court Administrator and Case Scheduling Office, Superior Court;

Administrative Office of the Courts.

SUPERIOR COURT

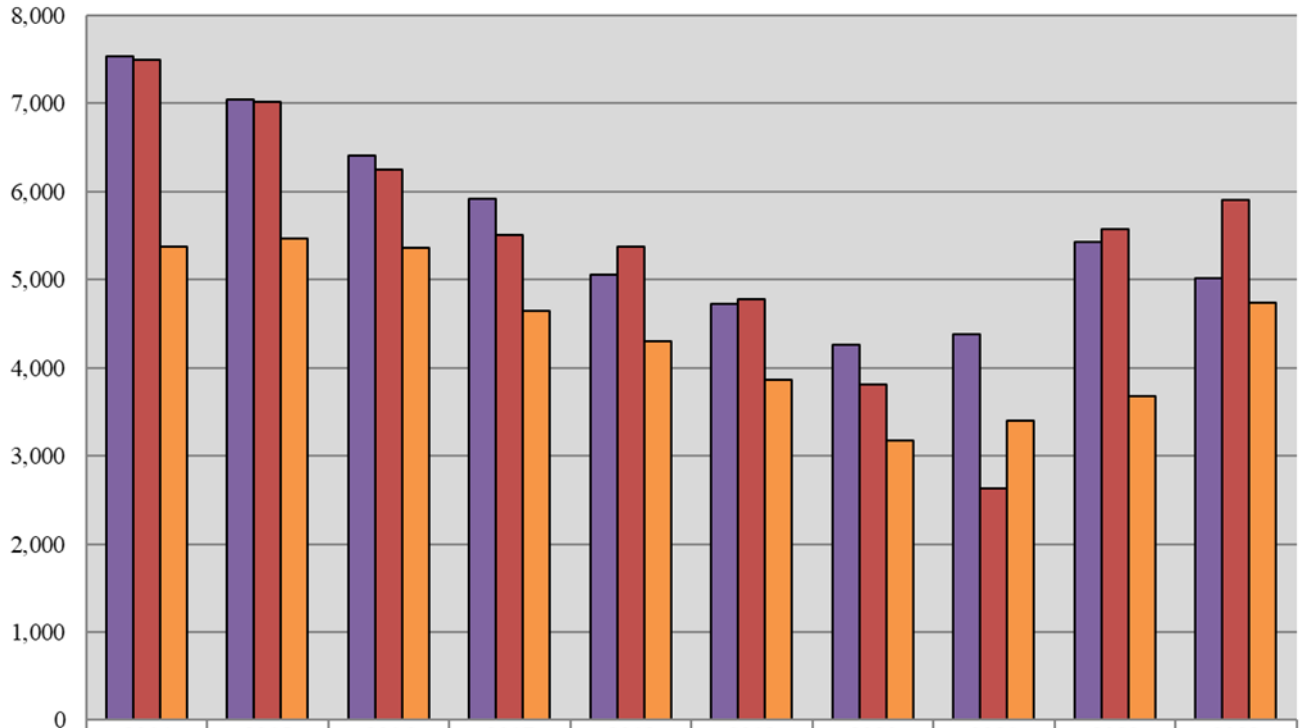
Caseload Comparison - Fiscal Years 2022-2023 - Criminal Case Filings				
	2022	2023	Change	% Change
New Castle County	2,876	2,874	-2	-0.1%
Kent County	857	788	-69	-8.1%
Sussex County	1,694	1,352	-342	-20.2%
State	5,427	5,014	-413	-7.6%

Caseload Comparison - Fiscal Years 2022-2023 - Criminal Case Dispositions				
	2022	2023	Change	% Change
New Castle County	2,601	3,363	762	29.3%
Kent County	1,203	926	-277	-23.0%
Sussex County	1,772	1,620	-152	-8.6%
State	5,576	5,909	333	6.0%

Source: Court Administrator and Case Scheduling Office, Superior Court;

Administrative Office of the Courts.

Superior Court Criminal 10-Year Caseload Trend



	2014	2015	2016	2017	2018	2019	2020	2021	2022	2023
■ Filings	7,532	7,042	6,402	5,921	5,056	4,719	4,258	4,385	5,427	5,014
■ Dispositions	7,497	7,016	6,252	5,513	5,379	4,776	3,811	2,633	5,576	5,909
■ VOP Filings	5,378	5,465	5,358	4,639	4,307	3,865	3,179	3,402	3,673	4,743

Fiscal Year

VOP = Violation of Probation

SUPERIOR COURT

Types of Dispositions Fiscal Year 2023 - Criminal Felony Guilty Pleas

	Pled Guilty Original		Pled Guilty Lesser		Total	
New Castle County	1,322	88.4%	173	11.6%	1,495	100%
Kent County	402	81.0%	94	19.0%	496	100%
Sussex County	695	91.3%	66	8.7%	761	100%
State	2,419	87.9%	333	12.1%	2,752	100%

Types of Dispositions Fiscal Year 2023- Criminal Misdemeanor Guilty Pleas

	Pled Guilty Original		Pled Guilty Lesser*		Total	
New Castle County	539	63.6%	309	36.4%	848	100%
Kent County	60	28.8%	148	71.2%	208	100%
Sussex County	244	41.6%	342	58.4%	586	100%
State	843	51.3%	799	48.7%	1,642	100%

Types of Dispositions Fiscal Year 2023 - Criminal Total Guilty Pleas

	Pled Guilty Original		Pled Guilty Lesser*		Total	
New Castle County	1,861	79.4%	482	20.6%	2,343	100%
Kent County	462	65.6%	242	34.4%	704	100%
Sussex County	939	69.7%	408	30.3%	1,347	100%
State	3,262	74.2%	1,132	25.8%	4,394	100%

Percentages may not add up to 100 due to rounding.

*Includes Probation Before Judgment & Guilty but Mentally Ill, First Offender Program & civil possession of marijuana (RSP).

Source: Court Administrator and Case Scheduling Office, Superior Court;

Administrative Office of the Courts.

SUPERIOR COURT

Types of Dispositions - Fiscal Year 2023 - Criminal Trials - Part One

	Jury Trial		Non-Jury Trial		Total	
New Castle County	97	92.4%	8	7.6%	105	100%
Kent County	15	100.0%	0	0%	15	100%
Sussex County	9	100.0%	0	0%	9	100%
State	121	93.8%	8	6.2%	129	100%

	Guilty		Not Guilty*		No Final Disposition**		Total	
New Castle County	76	72.4%	18	17.1%	11	10.5%	105	100%
Kent County	11	73.3%	1	6.7%	3	20.0%	15	100%
Sussex County	6	66.7%	2	22.2%	1	11.1%	9	100%
State	93	72.1%	21	16.3%	15	11.6%	129	100%

*Includes Acquittals, Dismissals at Trial, and Nolle Prosequis at Trial.

**Includes Hung Juries, Mistrials, and Reserved Decisions.

Source: Court Administrator and Case Scheduling Office, Superior Court; Administrative Office of the Courts.

SUPERIOR COURT

Types of Dispositions - Fiscal Year 2023 - Criminal Trials - Part Two

Jury Trial

	Guilty	Guilty LIO	Not Guilty	Pled Guilty at Trial	Nol Pros/Dismissed at Trial	Mistrial	Hung Jury	Total
New Castle County	60	10	16	0	0	3	8	97
Kent County	8	2	1	1	0	2	1	15
Sussex County	6	0	2	0	0	0	1	9
State	74	12	19	1	0	5	10	121

Non-Jury Trial

	Guilty	Guilty LIO	Not Guilty	Pled Guilty at Trial	Nol Pros/Dismissed at Trial	Mistrial	Reserved Decision	Total*
New Castle County	6	0	2	0	0	0	0	8
Kent County	0	0	0	0	0	0	0	0
Sussex County	0	0	0	0	0	0	0	0
State	6	0	2	0	0	0	0	8

All Trials									
	Guilty	Guilty LIO	Not Guilty	Pled Guilty at Trial	Nol Pros/Dismissed at Trial	Mistrial	Hung Jury	Reserved Decision	Total
New Castle County	66	10	18	0	0	3	8	0	105
Kent County	8	2	1	1	0	2	1	0	15
Sussex County	6	0	2	0	0	0	1	0	9
State	80	12	21	1	0	5	10	0	129

Types of Dispositions Fiscal Year 2023 - Criminal Nolle Prosequis									
	Nolle Prosequis By Special Condition		Nolle Prosequis By Merit		NPL		Total		
New Castle County	481	55.0%	344	39.3%	50	5.7%	875	100%	
Kent County	114	65.5%	60	34.5%	0	0%	174	100%	
Sussex County	15	6.3%	225	93.8%	0	0%	240	100%	
State	610	47.3%	629	48.8%	50	3.9%	1,289	100%	

NPL = Nolle Prosequi entered at time of Sentencing

Source: Court Administrator and Case Scheduling Office, Superior Court; Administrative Office of the Courts.

Percentages may not total 100 due to rounding

SUPERIOR COURT

Performance Comparison - Fiscal Years 2022-2023 - Criminal Cases - Average Time from Arrest to Disposition

	2022 (in days)	2023 (in days)	Change (in days)	% Change
New Castle County	433.2	398.2	-35.0	-8.1%
Kent County	364.7	270.9	-93.8	-25.7%
Sussex County	366.7	311.0	-55.7	-15.2%
State	397.1	354.2	-42.9	-10.8%

Performance Comparison - Fiscal Years 2022-2023 - Criminal Cases - Average Time from Indictment to Disposition

	2022 (in days)	2023 (in days)	Change (in days)	% Change
New Castle County	295.8	257.3	-38.5	-13.0%
Kent County	235.7	153.2	-82.5	-35.0%
Sussex County	257.8	231.8	-26.0	-10.1%
State	270.6	233.9	-36.7	-13.6%

Source: Court Administrator and Case Scheduling Office, Superior Court; Administrative Office of the Courts.

SUPERIOR COURT

Performance Summary Fiscal Year 2023 - Criminal Cases - Elapsed Time

	Total Number of Cases Disposed	Average Time from Arrest to Disposition	Average Time from Indictment to Disposition
New Castle County	3,331	398.2 days	257.3 days
Kent County	920	270.9 days	153.2 days
Sussex County	1,617	311.0 days	231.8 days
State	5,868	354.2 days	233.9 days

Performance Summary Fiscal Year 2023 - Criminal Cases - Compliance with Speedy Trial Standards

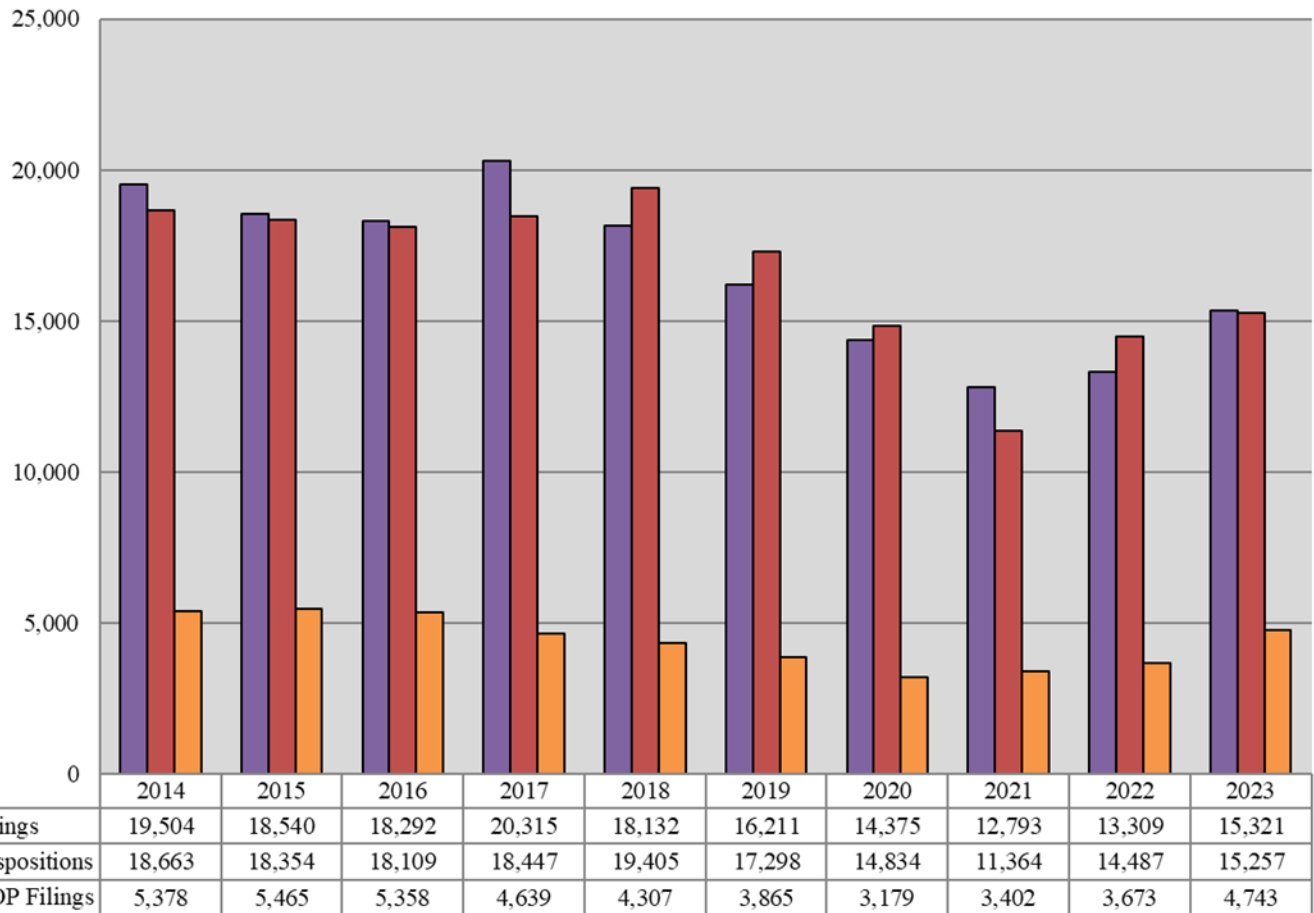
	Total Number of Cases Disposed	Disposed of within 120 Days of Indictment (90%)		Disposed of within 180 Days of Indictment (98%)		Disposed of within 365 Days of Indictment (100%)	
New Castle County	3,331	1,233	37.0%	1,461	43.9%	2,652	79.6%
Kent County	920	481	52.3%	653	71.0%	837	91.0%
Sussex County	1,617	571	35.3%	820	50.7%	1,352	83.6%
State	5,868	2,285	38.9%	2,934	50.0%	4,841	82.5%

Criminal Cases Performance Explanatory Notes - Fiscal Year 2023

1. The performance summary charts measure the average time from the date of arrest to the date of disposition as well as the average time from the date of indictment/information to the date of disposition.
2. In measuring the elapsed time for defendants for the purpose of determining the rate of compliance with the speedy trial standards, the following are excluded by the Court:
 - a) For all capiases, the time between the date that the capias is issued and the date that it is executed.
 - b) For all Rule 9 summonses and Rule 9 warrants, the time between the arrest and the indictment/information, if any.
 - c) For all mental examinations, the time between the date that the examination is ordered and the date of the receipt of the results.
 - d) For all defendants deemed to be incompetent, the period in which the defendant is considered incompetent.

Source: Court Administrator and Case Scheduling Office, Superior Court; Administrative Office of the Courts.

Superior Court Total 10-Year Caseload Trend



Fiscal Year

SUPERIOR COURT

Caseload Comparison - Fiscal Years 2022-2023 - Total Case Filings

	2022	2023	Change	% Change
New Castle County	8,794	10,842	2,048	23.3%
Kent County	1,843	1,967	124	6.7%
Sussex County	2,672	2,512	-160	-6.0%
State	13,309	15,321	2,012	15.1%

Caseload Comparison - Fiscal Years 2022-2023 - Total Case Dispositions

	2022	2023	Change	% Change
New Castle County	9,412	10,429	1,017	10.8%
Kent County	2,266	2,054	-212	-9.4%
Sussex County	2,809	2,774	-35	-1.2%
State	14,487	15,257	770	5.3%

Source: Court Administrator, Prothonotary's Offices, and Case Scheduling Office,
Superior Court; Administrative Office of the Courts.